

WGI 201 Carbon Steel Ball Valves

CRN

WGI ball valves combine quality performance at an affordable price. Each valve carries approvals that will cover most valve applications. These valves are used in different industries for a variety of applications.

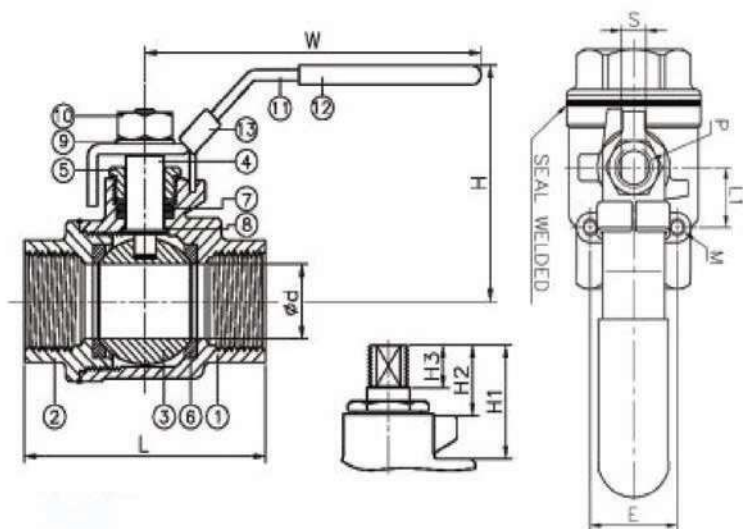
Specifications

Pressure Rating	1/4" — 2" 2,000 PSI
Porting	Full port
Temperature Rating	-40°F — 392°F (-40°C — 200°C)
Body Material	ASTM A216-WCB
Approvals	NACE MR-0175, CRN * Seal Weld Ends
Features	Blowing-Out Proof Stem, Locking Handle, Tapped and Drilled Mounting Pad



Material

Item	Parts	Material
1	Body	ASTM A216 - WCB
2	Cap	ASTM A216 - WCB
3	Ball	ASTM A351-CF8M
4	Stem	ASTM A276-316
5	Gland Nut	AISI 304
6	Seat	PTFE / RTFE
7	Seal	PTFE
8	Packing	PTFE / RTFE
9	Thrust Washer	PTFE
10	Spring Washer	AISI 304
11	Nut	AISI 304
12	Handle	Stainless Steel
13	Handle Sleeve	PVC
14	Locking Device	AISI 304



Dimensions

NPS	D	L	L1	H	W	H1	H2	H3	S	M	E	T	Weight (lb)
1/4"	0.46	2.38	0.55	1.97	4.02	0.91	0.63	0.41	0.20	M5	1.10	5/16" W	0.6
3/8"	0.51	2.38	0.55	1.97	4.02	0.91	0.63	0.41	0.20	M5	1.10	5/16" W	0.6
1/2"	0.59	2.52	0.55	1.97	4.02	0.91	0.67	0.41	0.20	M5	1.10	5/16" W	0.7
3/4"	0.79	3.03	0.87	2.44	4.72	1.14	0.87	0.53	0.26	M5	1.38	3/8" W	1.2
1"	0.98	3.54	0.87	2.97	6.26	1.34	0.94	0.61	0.31	M5	1.38	7/16" W	1.9
1 1/4"	1.26	3.94	0.94	3.19	6.26	1.34	0.97	0.61	0.31	M5	1.54	7/16" W	2.8
1 1/2"	1.50	4.65	0.94	3.86	7.40	1.54	1.02	0.69	0.35	M5	1.5	1/2" W	4.4
2"	1.97	5.43	0.94	4.25	7.40	1.54	1.02	0.69	0.35	M5	1.5	1/2" W	6.9

Thread Type: ASME B1.20.1 (NPT) | Dimensions: inch

WGI 301 CSA/CGA Stainless Steel Ball Valves

CRN

WGI ball valves combine quality performance at an affordable price. Each valve carries approvals that will cover most valve applications. These valves are used in different industries for a variety of applications.

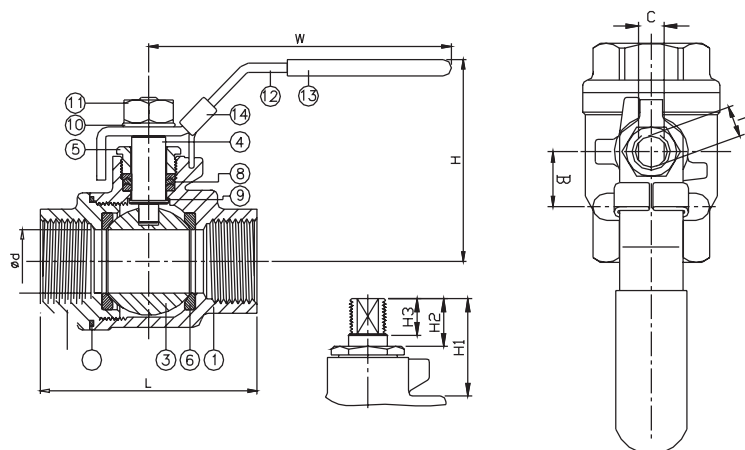
Specifications

Pressure Rating	1/4" — 1": 2,000 PSI, 1 1/4" — 2": 1,500 PSI
Porting	Full port
Temperature Rating	-40°F — 392°F (-40°C — 200°C)
Body Material	ASTM A351-CF8M
Approvals	NACE, CSA/CGA3.16 CRN
Features	Blowing-Out Proof Stem, Locking Handle, Tapped and Drilled Mounting Pad



Material

Item	Parts	Material
1	Body	ASTM A351-CF8M
2	Cap	ASTM A351-CF8M
3	Ball	ASTM A351-CF8M
4	Stem	ASTM A276-316
5	Gland Nut	AISI 304
6	Seat	PTFE / RTFE
7	Seal	PTFE
8	Packing	PTFE / RTFE
9	Thrust Washer	PTFE
10	Spring Washer	AISI 304
11	Nut	AISI 304
12	Handle	AISI 304
13	Handle Sleeve	PVC
14	Locking Device	AISI 304



Dimensions

NPS	D	L	L1	H	H1	H2	H3	W	S	E	M	T	Weight (lb)
1/4"	0.46	2.38	0.55	1.97	0.91	0.63	0.41	4.02	0.20	1.10	M5	5/16" W	0.60
3/8"	0.51	2.38	0.55	1.97	0.91	0.63	0.41	4.02	0.20	1.10	M5	5/16" W	0.60
1/2"	0.59	2.52	0.55	1.97	0.91	0.67	0.41	4.02	0.20	1.10	M5	5/16" W	0.70
3/4"	0.79	3.03	0.87	2.44	1.14	0.87	0.53	4.72	0.26	1.38	M5	3/8" W	1.20
1"	0.98	3.54	0.87	2.97	1.34	0.94	0.61	6.26	0.31	1.38	M5	7/16" W	1.90
1 1/4"	1.26	3.94	0.94	3.19	1.34	0.87	0.61	6.26	0.31	1.54	M5	7/16" W	2.80
1 1/2"	1.50	4.65	0.94	3.86	1.54	1.02	0.69	7.40	0.35	1.50	M5	1/2" W	4.40
2"	1.97	5.43	0.94	4.25	1.54	1.02	0.69	7.40	0.35	1.50	M5	1/2" W	6.90
2 1/2"	2.56	6.56	1.38	5.35	2.28	1.65	1.20	9.65	0.47	2.17	M5	3/4" W	13.20
3"	3.15	7.60	1.38	5.79	2.28	1.57	1.20	9.65	0.47	2.17	M5	3/4" W	22.30
4"	3.94	10.24	1.97	7.20	3.31	2.28	1.65	12.60	0.63	2.36	M5	1" W	-

Thread Type: ASME B1.20.1 (NPT) | Dimensions: inch

WGI 401 Stainless Steel Ball Valves Seal Weld

CRN

WGI 401 series stainless steel ball valves carry 2,000 PSI rating for the larger sizes and have a seal welded body. This ensures that the body of the valve is sealed and will not leak after installation.

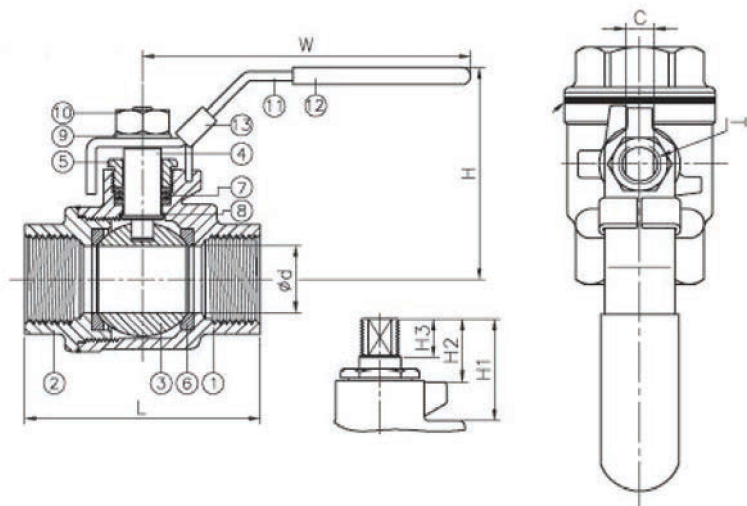
Specifications

Pressure Rating	1/4" — 2" 2,000 PSI
Porting	Full port
Temperature Rating	-40°F — 392°F (-40°C — 200°C)
Body Material	ASTM A351-CF8M
Approvals	NACE MR-0175, CRN * Seal Weld Ends
Features	Blowing-Out Proof Stem, Locking Handle, Tapped and Drilled Mounting Pad



Material

Item	Parts	Material
1	Body	ASTM A351-CF8M
2	Cap	ASTM A351-CF8M
3	Ball	ASTM A351-CF8M
4	Stem	ASTM A276-316
5	Gland Nut	AISI 304
6	Seat	PTFE / RTFE
7	Packing	Graphite
8	Thrust Washer	CTFE
9	Spring Washer	AISI 304
10	Nut	AISI 304
11	Handle	Stainless Steel
12	Handle Sleeve	PVC
13	Locking Device	AISI 304



Dimensions

NPS	d	L	W	H	H1	H2	H3	T	Weight (lb)
1/4"	1.26	3.94	6.26	3.19	1.34	0.87	0.61	7/16" W	2.80
1/2"	1.5	4.65	7.4	3.86	1.54	1.02	0.69	1/2" W	4.40
2"	1.97	5.43	7.4	4.25	1.54	1.02	0.69	1/2" W	6.90

Thread Type: ASME B1.20.1 (NPT) | Dimensions: inch

WGI 501 Stainless Steel Ball Valves

CRN

WGI ball valves combine quality performance at an affordable price. Each valve carries approvals that will cover most valve applications. These valves are used in many different industries for a variety of applications.

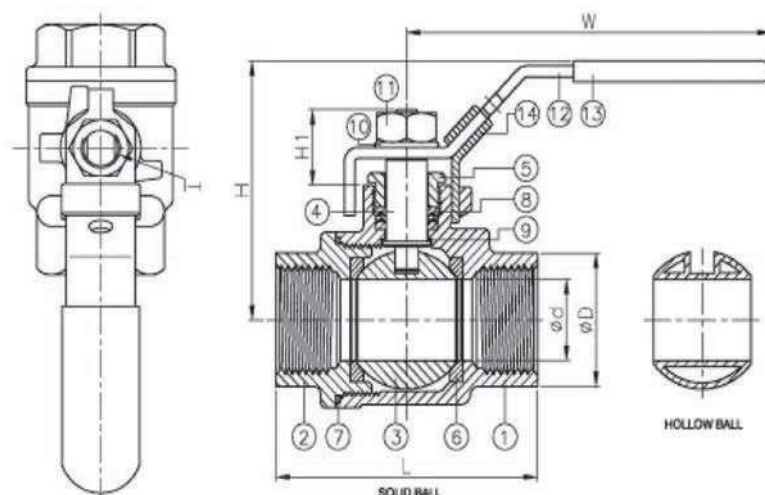
Specifications

Pressure Rating	1/4" — 2" 1,000 PSI
Porting	Full port
Temperature Rating	-40°F — 392°F (-40°C — 200°C)
Body Material	ASTM A351-CF8M
Approvals	NACE, CRN
Features	Blowing-Out Proof Stem, Locking Handle, Tapped and Drilled Mounting Pad



Material

Item	Parts	Material
1	Body	ASTM A351-CF8M
2	Cap	ASTM A351-CF8M
3	Solid Ball	ASTM A351-CF8M
	Hollow Ball	ASTM A240-316
4	Stem	ASTM A276-316
5	Gland	AISI 304
6	Ball Seat	RTFE
7	Body Seal	PTFE
8	Packing	PTFE
9	Thrust Washer	PTFE
10	Spring Washer	AISI 304
11	Nut	AISI 304
12	Handle	Stainless Steel
13	Handle Sleeve	PVC
14	Lock Device	Stainless Steel



Dimensions

NPS	d	D	L	H	H1	T	W	S	Weight (lb)	
									Solid Ball	Hollow Ball
1/4"	0.46	0.75	2.0	2.30	0.71	3/8" - 24UNF	3.94	0.35	0.5	-
3/8"	0.49	0.89	2.0	2.30	0.71	3/8" - 24UNF	3.94	0.35	0.5	-
1/2"	0.59	1.02	2.28	2.30	0.73	3/8" - 24UNF	3.94	0.35	0.7	-
3/4"	0.79	1.26	2.58	2.50	0.89	7/16" - 20UNF	4.92	0.35	1.0	-
1"	0.98	1.50	3.10	3.07	0.98	7/16" - 20UNF	5.87	0.43	1.7	-
1 1/4"	1.26	1.89	3.54	3.27	1.02	7/16" - 20UNF	5.87	0.43	2.5	-
1 1/2"	1.50	2.16	4.13	4.02	1.18	3/4" - 10UNF	7.48	0.55	3.9	-
2"	1.97	2.64	4.88	4.25	1.18	3/4" - 10UNF	7.48	0.55	5.9	5.2

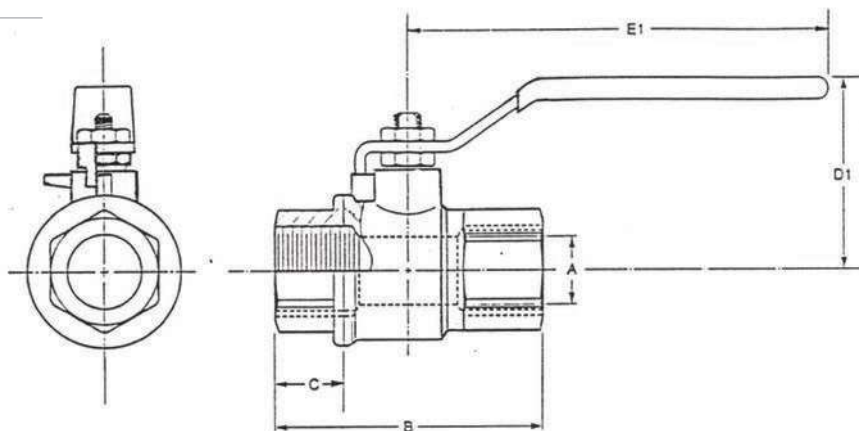
Thread Type: ASME B1.20.1 (NPT) | Dimensions: inch

WGI 601 Series Brass Ball Valves

WGI 601 series offers a high quality brass ball valve that is used in HVAC, agriculture, irrigation, hydraulic and other industries. This series complies with ANSI B1.20.1.

Specifications

Sizes	1/4" — 4" NPT
Porting	Full port
Body Material	Cast brass
Ball Material	Chrome plated brass
Seat Material	Teflon
Stem Packing	Teflon
Pressure Rating	600 PSI WOG / 150 PSI working steam pressure
Temperature Rating	-20°F — 300°F (-29°C — 150°C)
WOG Options	Optional solder by solder ends (special order)



Dimensions

Part Number	A	B	C	D1	E1	Weight (lb)
601-1/4MF-MINI	0.22 / 5.6	1.75 / 44.5	0.375 / 10.0	1.75 / 44.5	1.5 / 88.9	0.44 / 88.9
601-1/4FF-MINI	0.22 / 5.6	1.75 / 44.5	0.375 / 10.0	1.75 / 44.5	1.5 / 88.9	0.44 / 88.9
601-1/4"	0.25 / 6.4	1.75 / 44.5	0.375 / 10.0	1.75 / 44.5	3.50 / 88.9	0.44 / 88.9
601-3/8"	0.375 / 9.5	1.75 / 44.5	0.375 / 10.0	1.75 / 44.5	3.50 / 88.9	0.44 / 88.9
601-1/2"	0.50 / 12.7	2.00 / 50.8	0.50 / 12.7	1.95 / 49.5	3.50 / 88.9	0.55 / 0.25
601-3/4"	0.75 / 19.1	2.25 / 57.2	0.57 / 14.5	2.10 / 53.3	4.10 / 104.1	0.77 / 0.35
601-1"	1.00 / 25.4	2.80 / 71.1	0.70 / 17.0	2.60 / 66.0	4.70 / 119.4	1.28 / 0.58
601-1 1/4"	1.25 / 31.8	3.22 / 81.8	0.75 / 19.1	3.00 / 76.2	4.70 / 119.4	2.20 / 1.00
601-1 1/2"	1.50 / 38.1	3.60 / 91.4	0.75 / 19.1	3.35 / 85.1	5.75 / 146.1	3.04 / 1.38
601-2"	2.00 / 50.1	4.20 / 106.7	0.80 / 20.3	3.60 / 91.4	5.75 / 146.1	3.86 / 1.75
601-2 1/2"	2.50 / 63.5	5.30 / 134.6	1.00 / 25.4	4.50 / 114.3	9.20 / 233.7	8.27 / 3.75
601-3"	3.00 / 76.2	6.25 / 158.8	1.20 / 30.5	4.90 / 124.5	9.20 / 233.7	11.02 / 5.00
601-4"	4.00 / 101.6	7.40 / 188.0	1.40 / 35.6	5.70 / 144.8	9.20 / 233.7	18.19 / 8.25

Dimensions: inch / mm

WGI 701/702 Series Brass CSA Ball Valves NPT/Solder

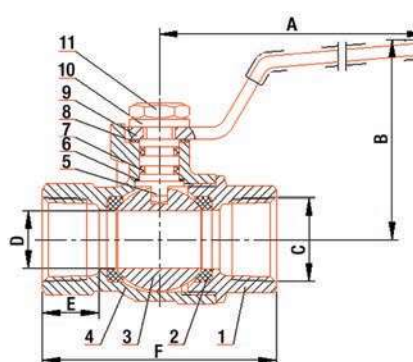
Full port ball valves are manually operated ball valves for gas piping carrying natural gas, propane, butane, air and inert gases.

Specifications

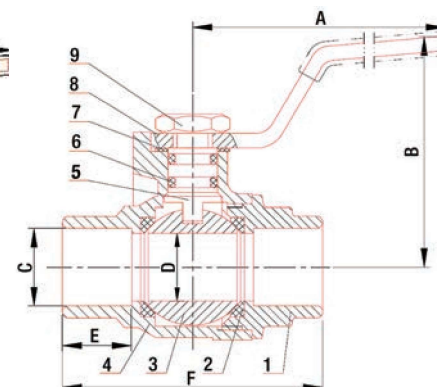
Size	1/4" — 2"
Maximum Operating Pressure	600 WOG / 150 WSP
Body Material	Forged brass
Seats	PTFE
Stem Material	Forged brass
Handle	Steel
Packing	Double O-ring seal
Stem	Blow out proof
Temperature Limits	-30°F — 248°F (-30°C — 120°C)
Agency Approvals	CSA - FM - UL - CE
Thread Standard	ANSI B1.20.1
CSA Certified	<ul style="list-style-type: none"> • ANSI Z21.15/CSA 9.1 Class 3371-08 and Class 3371-88 0.5 PSI • ANSI B16.33 Class 3371-14 and 3371-94 125 PSI • CSA 3.16 Class 3371-10 125 PSI • CSA 3-88 and CGA CR91-002 125 PSI • ASME 16.44 Class 3371-92 5 PSI • CSA file # 205653



701 - Threaded Series



702 - Solder Series



Dimensions

Size	A		B		C		D		E		F	
	NPT	Solder	NPT	Solder	NPT	Solder	NPT	Solder	NPT	Solder	NPT	Solder
1/4"	60	-	42	-	1/4-18 NPT	-	8	-	11.5	-	41.8	-
3/8"	85	-	47	-	3/8-18 NPT	-	10	-	12.5	-	47.5	-
1/2"	90	90	52	50	1/2-14 NPT	16	14	14	16	12.5	57.2	52.6
3/4"	90	95	52.4	54.5	3/4-14 NPT	22.3	19	19	18.5	19	67.6	74.0
1"	115	115	58.6	62.7	1-11½ NPT	28.7	24	24	21	23	79.6	90.0
1¼"	141	140	76	73.5	1¼-11½ NPT	35	31	31	23	24.5	92.5	99.0
1½"	141	140	80	75	1½-11½ NPT	41.4	38	38	23.5	28	95.0	113.5
2"	151	150	90	86.5	2-11½ NPT	54.1	49	49	24	34	114.0	133.0

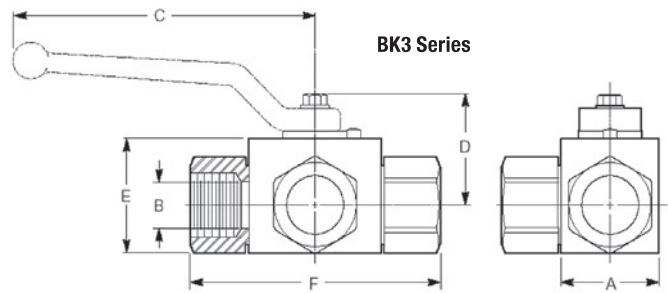
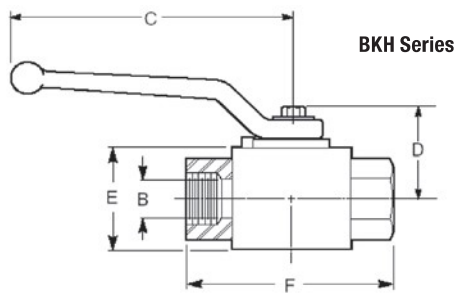
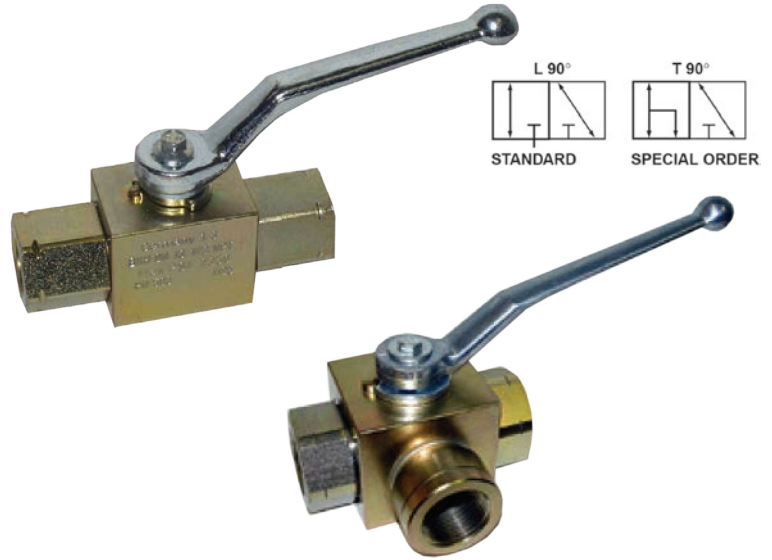
Dimensions: inch / mm

WGI BKH/BK3 Series High Pressure Ball Valves

WGI BKH high pressure series ball valves are made of nickel plated carbon steel and are primarily used in the hydraulic industry where pressures operate around 5,000 PSI. WGI BKH series ball valves are field repairable, have blowout proof stems and delrin ball seats.

Specifications

Sizes	1/4" — 2" NPT
Porting	Full port
Body Material	Carbon steel
Ball & Stem Material	Nickel plated carbon steel
Seat Material	Delrin
Stem Packing	Buna N
Pressure Rating	1/4", 3/8" and 1/2" 7,350 PSI 3/4" — 2" 5,000 PSI
Temperature Rating	-20°F — 300°F (-29°C — 150°C)
WOG Options	Die-cast zinc



Dimensions

BKH Series								
Size	Working Pressure	A	B	C	D	E	F	Weight (kg)
1/4"	7,350 PSI	26	6	115	13.5	47	69	0.4
3/8"	7,350 PSI	32	10	115	17.5	52	78	0.55
1/2"	7,350 PSI	35	13	115	19	54	104	0.75
3/4"	5,880 PSI	49	20	200	24.5	75	102	1.63
1"	5,145 PSI	58	25	200	29.5	83	119	2.3
1 1/4"	5,145 PSI	81	32	320	40.5	107	120	3.3
1 1/2"	5,145 PSI	100	38	320	50	124	130	5.4

BK3 Series								
Size	Working Pressure	A	B	C	D	E	F	Weight (kg)
1/2"	5,145 PSI	1.38	0.51	4.21	1.31	1.57	3.62	-
3/4"	5,145 PSI	1.93	0.79	6.5	1.91	2.24	3.82	-
1"	5,145 PSI	2.36	0.94	6.5	1.95	2.36	4.45	-

Dimensions: mm